





OUR BUSINESS WELL
INED INDUSTRIAL
E, WHERE YOU CAN
LL YOUR BUSINESS
R E A M



FACILITIES

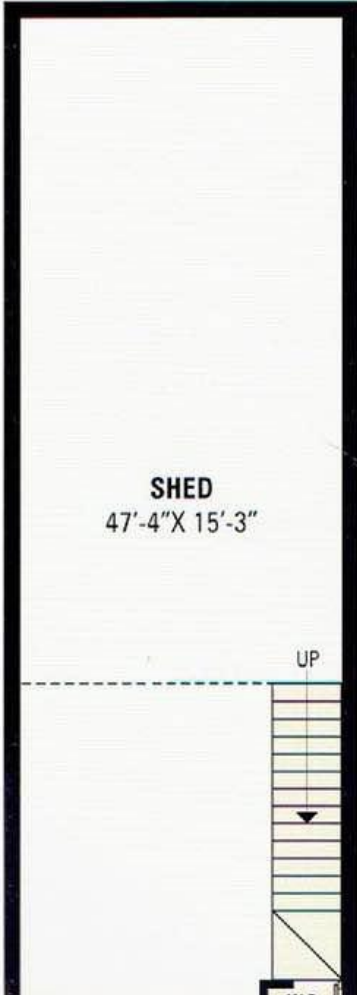
- R.C.C Frame Structure Design.
- Well Develop Mezzanine Office floor with 9' Ft. height and Pantry Area.
- Office with highend facilities like Wooden Floor, Split A/c. and Secure Partition.
- 10'.6" x 9' wide entry with heavy Rolling Shutter.
- Outside Double Coat Tipani Plaster with Acrylic Paint and inside Single Coat Finish Plaster.
- Individual Toilet in each Unit.
- Trimix floor with IPS.

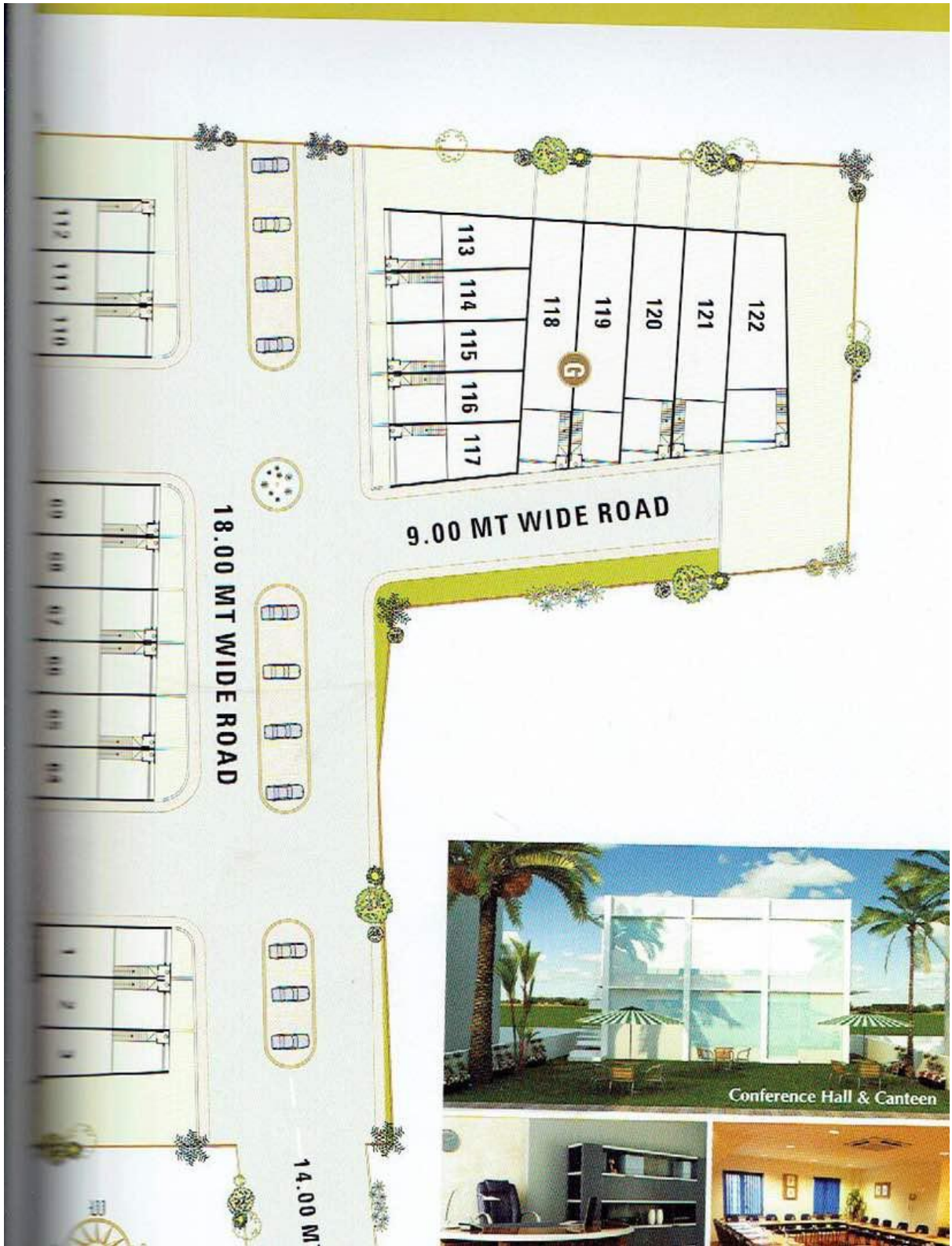


SPECIAL FEATURES

- NA – NOC Title Clear
- Project by reputed developers gives you an assurance of good returns in future for your investments
- Lush Green Garden Environment.
- Design by renowned & leading Architect.
- Prime Location well connected with NH8A (Rajkot-Kandla-Ahmedabad Highway)
- Wide internal R.C.C. Road with High Glare street light and well designed landscape.
- Uninterrupted Water Supply & 5 HP Power Supply.
- Wide Parking Space in campus.
- Decorative Gate with single Entry – Exit.
- Project under 24 x 7 hrs. Security with CCTV Camera Surveillance.
- High Speed Internet & Wi-Fi Zone.
- Food Court, Canteen Facility & Conference Hall in campus.
- Ideal for Pharmaceutical, Packaging, Food, Engineering, Textile and Godown.



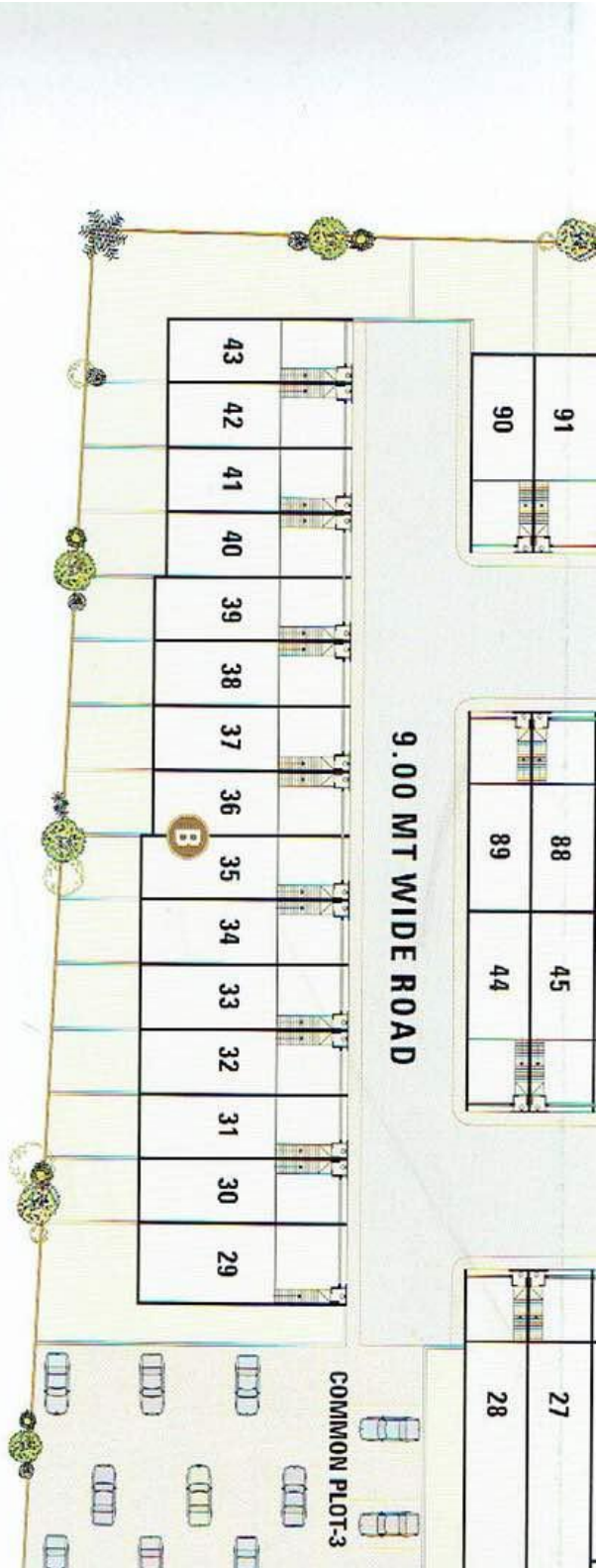


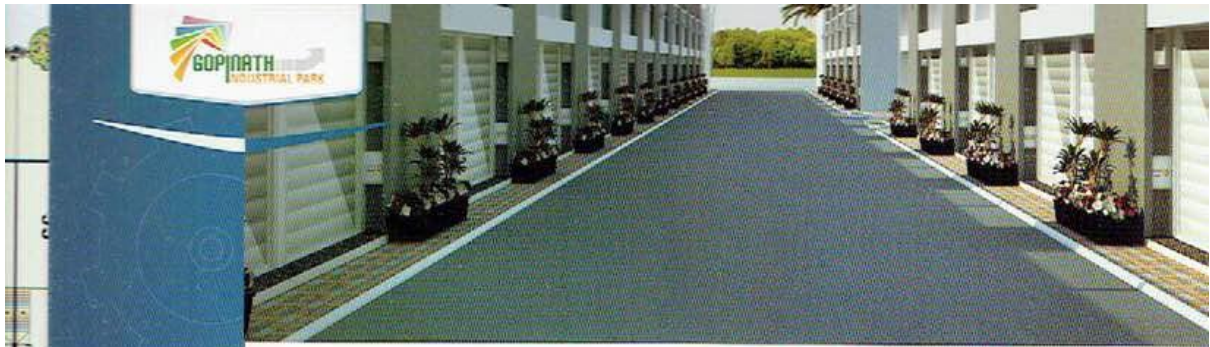






Shed No.	Dimensions
1-2	15'-6" X 42'-1"
3	13'-7" X 42'-1"
4-7	45'-11.5" X 15'-3"
8-9	47'-6" X 15'-3"
10-11	50'-4" X 15'-3"
12-15	51'-3.5" X 15'-3"
16-17	56'-8" X 15'-3"
18-19	60'-10.5" X 15'-3"
20-22	63'-6" X 15'-3"
23-24	66'-5.5" X 15'-3"
25-26	70'-2.5" X 15'-3"
27-28	73'-2" X 15'-3"
29	19'-2.5" X 49'-9.5"
30-35	15'-4.5" X 49'-9.5"
36-39	15'-4.5" X 46'-10"
40-42	15'-4.5" X 43'-10"
43	15'-1.5" X 43'-10"
44-63	47'-4.5" X 15'-3"
64	15'-6.5" X 44'-3.5"
65-68	15'-11" X 44'-3.5"
69	15'-6.5" X 44'-3.5"
70-89	47'-4.5" X 15'-3"
90-109	47'-0" X 15'-3"
110	15'-6.5" X 40'-4.5"
111	15'-11" X 40'-4.5"
112	15'-6.5" X 40'-4.5"
113	16'-11" X 43'-11"
114	15'-3" X 42'-6"
115	15'-3" X 41'-1.5"
116	15'-3" X 39'-8.5"
117	17'-0.5" X 38'-3.5"
118	75'-5" X 15'-3"
119	74'-2.5" X 15'-3"
120	70'-0.5" X 15'-3"
121	68'-10" X 15'-3"
122	64'-9.5" X 17'-8"





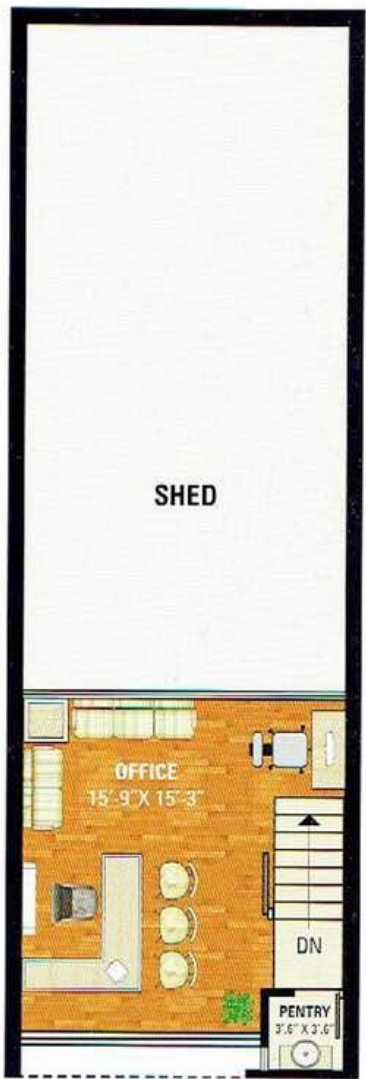
WI

VI

27



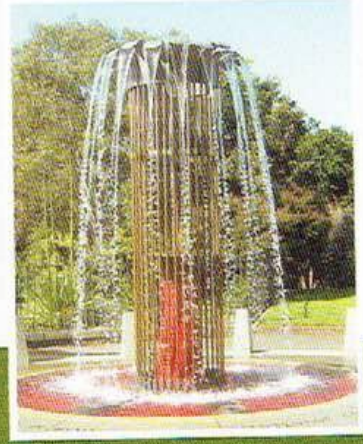
Ground Floor



1st Floor



Ideal for Pharmaceutical, Packaging, Food, Engineering, Textile and Godown



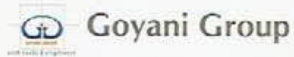
Site Map



Developers



Architect & Structure Engineering



Site

Gopinath Industrial Park
Block No. 53, Moje Vasna,
Chanchrawadi (Moraiya) Tal. Sanand,
Dist. Ahmedabad, Gujarat.
Mob. : +91.95379 54545, 95370 54545.

Notes